



GROWING CHRIST-CENTERED COMMUNITY
IN A DISTRACTING WORLD

CTL News, January 26, 2020

Do you remember about 10 years ago the different colored rubber bands people would wear on their wrist? On them were the letters WWJD? – "What Would Jesus Do? I don't see those bracelets very much anymore, but back then you would see WWJD? on bumper stickers, T-shirts, necklaces and backpacks.

If you wore a bracelet like that on your wrist it would be visible to you throughout the day. It would pose a frequent challenge: sometimes for a big decision, but mostly for our many decisions and encounters in daily life. WWJD? The custom was started by a youth group at Calvary Reformed Church in Holland, Michigan. Those young people wanted a tangible way to remind them of their faith in their everyday lives. Nowadays, in place of the wristband, they might choose a tattoo!

They were responding to Jesus' call to be "light to the world." Maybe not a light to Zambia, or New Zealand, but a light in their world of family, school, part-time jobs and community. And then, who knows? – someday maybe even Zambia and New Zealand!

One of the themes that run through the scripture readings for Epiphany is the call for Israel and then, later, for the Church to be a light to the world. So in your many decisions and encounters in your daily life, how are you being Christ's light to those around you? The question may not be in vogue anymore, but it is still a good one to ask yourself "What would Jesus do" in this situation?

January 26, 2020

CENTRAL TO LIFE





SERMON SERIES

"GIFTS THAT KEEP ON GIVING"



JOURNEYS OF PAUL CRUISE



Have you ever been interested in learning more about the teachings of Paul? Have you ever been interested in traveling to the places Paul wrote letters and traveled to such as Rome, Greece, and Turkey? If so, you are invited to join Rev. Kelly Brooks, Rev. Jim Hawk, and members from the NWTX Annual Conference on an Educational Opportunities Journeys of Paul Cruise taking place **September 7-19th, 2020.**

THE DEADLINE TO REGISTER IS MARCH 1, 2020

Information is available at the Welcome Desk.

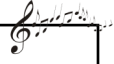
THIRD SPACE MINISTRIES

What is a 3rd Space? 3rd Space refers to places where people gather outside of their homes (1st space) and their workspace (2nd space). Examples of third places would be environments such as coffee shops, breweries, farmers markets, and parks.

- **Starbucks Bible Study:** (Lomas and Washington) Wednesdays, 11-12pm
- **Brewery Study:** (High and Dry on Lomas and Adams) Wednesdays, 6pm-8pm.
- **Sabbath in The Suburbs:** (High and Dry) TBA
- **Shared Table:** Shared Table is a community initiative where you are asked to invite your neighbors into your home for a potluck meal on any day during the last week of the month. No expectations - No requirements - Just be in community! Please share your photos and experiences on the CUMC Facebook page.

Do you have an idea for a 3rd Space Ministry?
Please Contact Pastor Kelly @ kellyb@centraltolife.org

LUNCHTIME CONCERT



Join us on **Sunday, February 9** for a special lunchtime concert featuring the Zia Singers, a women's chorus based in Santa Fe, NM! Lunch catered by Sandy Dow starting at noon; \$10 per person (please sign up by Sunday, February 2). Concert begins by 1:00pm in the Sanctuary. For admission, bring donations for SAFE House, Albuquerque's shelter for survivors of domestic partner violence (new or gently used clothing, towels, diapers and wipes, toiletries, toothpaste). Freewill donations to benefit the concert series gratefully accepted.

CHILDREN AND YOUTH MINISTRIES

- Sunday School classes meet at 9:45am in rooms 105 (Elementary), 107 (ages 3 & 4), and 301/302 (Youth: 6th - 12th grade)
 - Childcare for ages 0-8 is available during worship services and Sunday School – (Located on the Lower Level of the building.)
 - Church 4 Kids takes place every Sunday during the second service. This is a time where children 0-Elementary are invited to the Chapel to spend time with one of the clergy to learn more about the scripture lesson of the day in an age-appropriate setting.
 - Youth fellowship meets every Sunday from 12:30-2:30pm in the Youth Lounge / 3rd Floor
- Contact Pastor Kelly or Stacey Hawk for more information

ADULT MINISTRIES

- **Sundays:** Sunday School classes meet at 9:45am. Choose from a variety of classes. See the Pew Packets located in the pew backs in the sanctuary, or visit with the Welcome Desk volunteers for more information.
 - **Monday Bible Study:** 6:30pm, 3rd Floor
 - **Clergy Conversations:** 4th Sunday of each month, 9:45-10:45am, Life Center
 - **WOW:** Wednesdays, 9:30-11:30am, 3rd Floor
- Please contact Pastor Kelly for more information.

All announcements for the CTL News are due via email to JesusValdez@centraltolife.org by **Monday at 5pm.**



Get connected! Sign up for Central Connections, our weekly electronic newsletter, at www.centraltolife.org or send an email to Jesus Valdez at jesusvaldez@centraltolife.org.
201 University Blvd NE Albuquerque, NM 87106 (505) 243-7834 www.centraltolife.org
Services broadcast on KAZQ TV-32—Sunday, 11 am & 7 pm

