

For the next three weeks, the Gospel lesson comes from Matthew's version of the Sermon on the Mount. There is so much good material written on the Sermon on the Mount, it is hard to decide what to use. So, today's CTL is an adaptation of the Beatitudes that I could not figure out how to use in worship today.

Here's a fresh take on the Beatitudes from Brian McLaren and Rob Bell. It was posted on Third Space.

**The Beatitudes**

(see Luke 6:20-22, Matthew 5:3-12)

- The poor, and those in solidarity with them – God is on your side.
- Those who mourn and feel grief about the state of the world – God is on your side.
- The non-violent, gentle and humble – God is on your side.
- Those who hunger and thirst for the common good – God is on your side.
- The merciful and compassionate – God is on your side.
- Those characterized by sincerity, kindness and generosity – God is on your side.
- Those who work for peace and reconciliation – God is on your side.
- Those who keep seeking justice – God is on your side.
- Those who stand for justice and truth as the prophets did,  
who refuse to be quiet even when slandered,  
misrepresented, threatened, imprisoned or harmed – God is on your side!

**Lent Season Services and Studies**

**Bible Studies**

**Wednesday's, February 26th-April 1st, 11am-12pm** at Starbucks on Lomas and Washington, Pastor Kelly will lead a study on Lent in a Season of Change

**Thursday's, February 27th-April 2nd, 6-7pm** in the Conference Room, Pastor Greg will lead a study on *The Walk* by Adam Hamilton

**Worship Services**

**Ash Wednesday:** 7:00am Chapel & 6:30pm Sanctuary

**Maundy Thursday:** 7:30pm Sanctuary

**Palm Sunday:** 8:30am & 11:00am

**Good Friday:** 7:30pm Sanctuary

**Easter:** 8:30am & 11:00am Sanctuary

*An Easter Sunrise Meditation will be available at the Welcome Desk for you to take home.*

CENTRAL TO LIFE  
February 2, 2020





## SERMON SERIES

### "GIFTS THAT KEEP ON GIVING"



### JOURNEYS OF PAUL CRUISE



Have you ever been interested in learning more about the teachings of Paul? Have you ever been interested in traveling to the places Paul wrote letters and traveled to such as Rome, Greece, and Turkey? If so, you are invited to join Rev. Kelly Brooks, Rev. Jim Hawk, and members from the NWTX Annual Conference on an Educational Opportunities Journeys of Paul Cruise taking place **September 7-19th, 2020.**

**THE DEADLINE TO REGISTER IS MARCH 1, 2020**

Information is available at the Welcome Desk.

### THIRD SPACE MINISTRIES

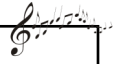
*What is a 3rd Space? 3rd Space refers to places where people gather outside of their homes (1st space) and their workspace (2nd space). Examples of third places would be environments such as coffee shops, breweries, farmers markets, and parks.*

- **Starbucks Bible Study:** (Lomas and Washington) Wednesdays, 11-12pm
- **Brewery Study:** (High and Dry on Lomas and Adams) Wednesdays, 6pm-8pm.
- **Sabbath in The Suburbs:** (High and Dry) TBA
- **Shared Table:** Shared Table is a community initiative where you are asked to invite your neighbors into your home for a potluck meal on any day during the last week of the month. No expectations - No requirements - Just be in community! Please share your photos and experiences on the CUMC Facebook page.

***Do you have an idea for a 3rd Space Ministry?***

***Please Contact Pastor Kelly @ [kellyb@centraltolife.org](mailto:kellyb@centraltolife.org)***

### LUNCHTIME CONCERT



Join us on **Sunday, February 9** for a special lunchtime concert featuring the Zia Singers, a women's chorus based in Santa Fe, NM! Lunch catered by Sandy Dow starting at noon; \$10 per person (please sign up by Sunday, February 2). Concert begins by 1:00pm in the Sanctuary. For admission, bring donations for SAFE House, Albuquerque's shelter for survivors of domestic partner violence (new or gently used clothing, towels, diapers and wipes, toiletries, toothpaste). Freewill donations to benefit the concert series gratefully accepted.

### CHILDREN AND YOUTH MINISTRIES

- Sunday School classes meet at 9:45am in rooms 105 (Elementary), 107 (ages 3 & 4), and 301/302 (Youth: 6th - 12th grade)
- Childcare for ages 0-8 is available during worship services and Sunday School – (Located on the Lower Level of the building.)
- Church 4 Kids takes place every Sunday during the second service. This is a time where children 0-Elementary are invited to the Chapel to spend time with one of the clergy to learn more about the scripture lesson of the day in an age-appropriate setting.
- Youth fellowship meets every Sunday from 12:30-2:30pm in the Youth Lounge / 3<sup>rd</sup> Floor

Contact Pastor Kelly @ [kellyb@centraltolife.org](mailto:kellyb@centraltolife.org), or Stacey Hawk @ [shawk@centraltolife.org](mailto:shawk@centraltolife.org) for more information

### ADULT MINISTRIES

- **Sundays:** Sunday School classes meet at 9:45am. Choose from a variety of classes. See the Pew Packets located in the pew backs in the sanctuary, or visit with the Welcome Desk volunteers for more information.
  - **Monday Bible Study:** 6:30pm, 3<sup>rd</sup> Floor
  - **Clergy Conversations:** 4th Sunday of each month, 9:45-10:45am, Life Center
  - **WOW:** Wednesdays, 9:30-11:30am, 3<sup>rd</sup> Floor
- Please contact Pastor Kelly @ [kellyb@centraltolife.org](mailto:kellyb@centraltolife.org) for more information.

All announcements for the CTL News are due via email to [JesusValdez@centraltolife.org](mailto:JesusValdez@centraltolife.org) by **Monday at 5pm.**



**Get connected!** Sign up for Central Connections, our weekly electronic newsletter, at [www.centraltolife.org](http://www.centraltolife.org) or send an email to Jesus Valdez at [jesusvaldez@centraltolife.org](mailto:jesusvaldez@centraltolife.org).  
201 University Blvd NE Albuquerque, NM 87106 (505) 243-7834 [www.centraltolife.org](http://www.centraltolife.org)  
Services broadcast on KAZQ TV-32—Sunday, 11 am & 7 pm

